

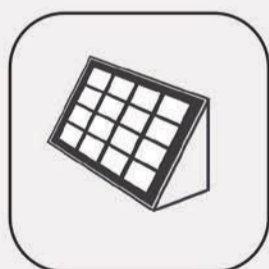
# ALL IN ONE

▶ LFB36W

## Solar Billboard Light



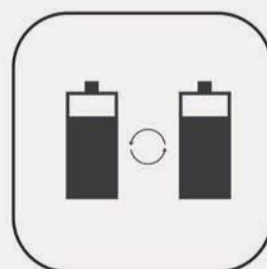
Shenzhen Leadray Optoelectronic Co.,Ltd.



Monocrystalline  
Solar Module



Efficient  
Controller



Battery  
System



CREE LED



All-in-One



Anti-Typhoon



Time Control

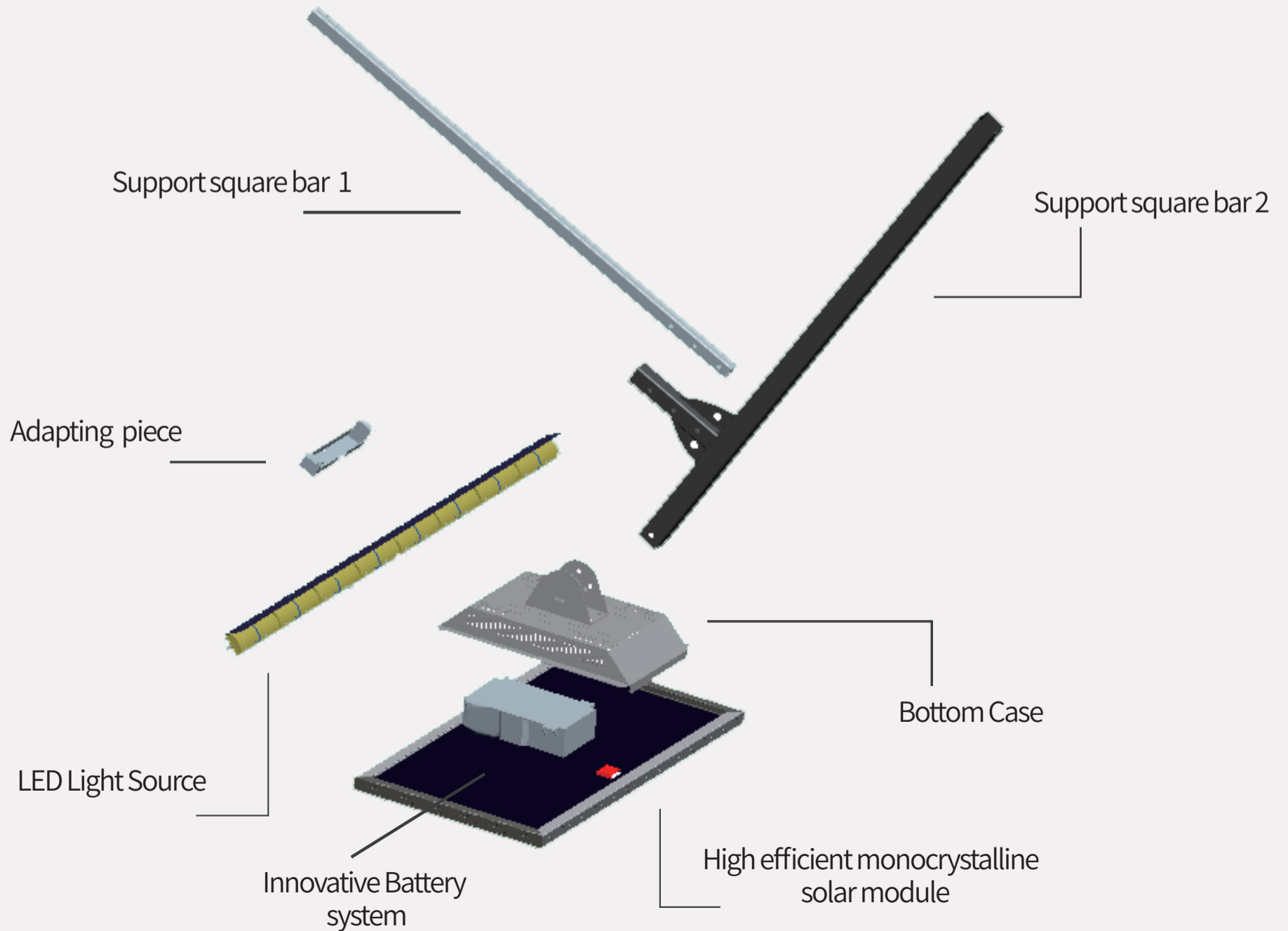


IP65



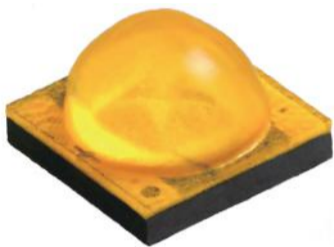
Patent Design, Global First  
Water-proof & Multi-layer optical system design  
Waterproof and temperature control battery protection design  
Adjustable angle solar panel

Simple installation, easy maintenance.  
Each part is imaginative,  
all materials are carefully selected.  
Protected against all weathers.



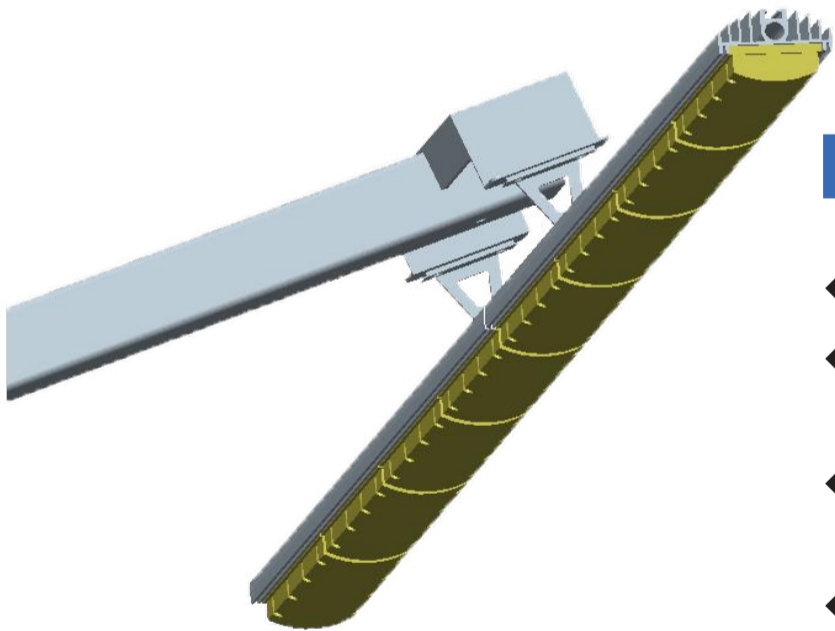
# Our Advantages

## About LED



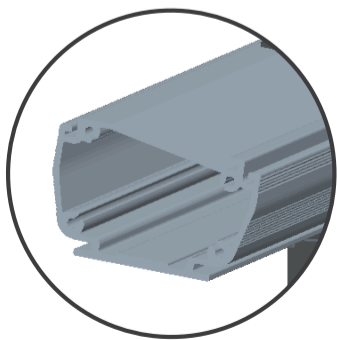
## Cree® XLamp® XT-E LEDs

- ◆ CREE LED without gold wire packaging, creates a first-class light source
- ◆ 140Lm/W, 30% brighter than other similar products
- ◆ Longer working hours, 15% longer than other similar products

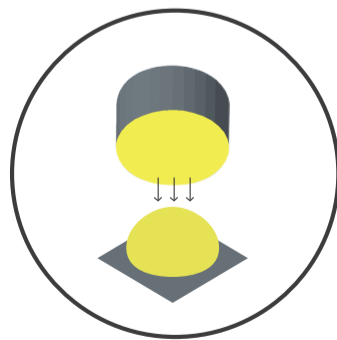


## LED Modular System Design

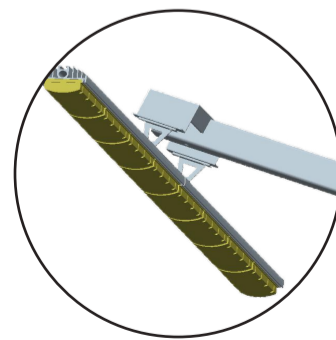
- ◆ Rectangular beam design, with bat wing light distribution
- ◆ The well optimized light distribution, made for a more uniform and wider lighting area.
- ◆ Lens with exhaust valve, prevent water vapor gathered & makes longer lifespan
- ◆ Original thermal system design, innovative heat sink with IP67 PG head



Innovative heat sink



Different beam angle  
Light more uniform

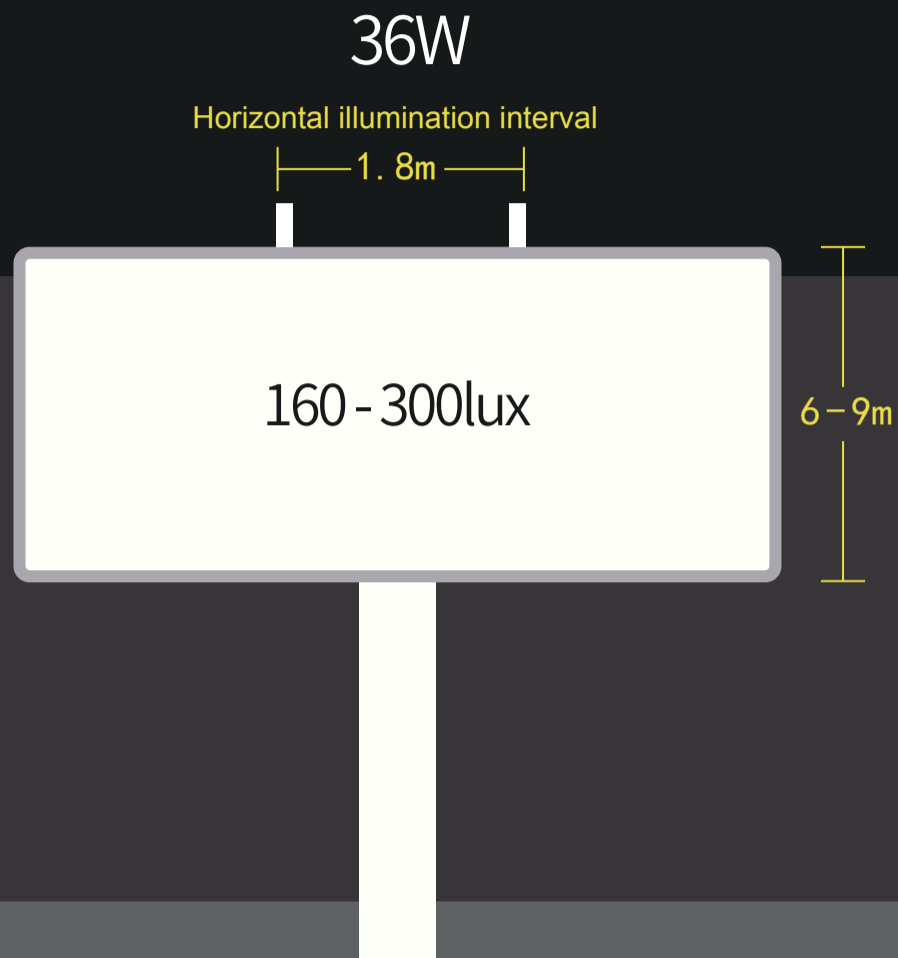


Multi-layer optical  
system design



IP67 PG head

# Recommended Installation Demonstration



## Time Control:

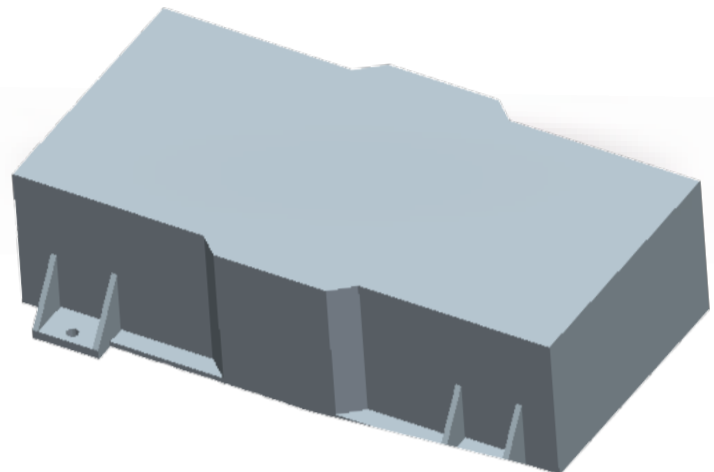
LFB36W comes complete with smart control system

Regular automatically the light source from time control:

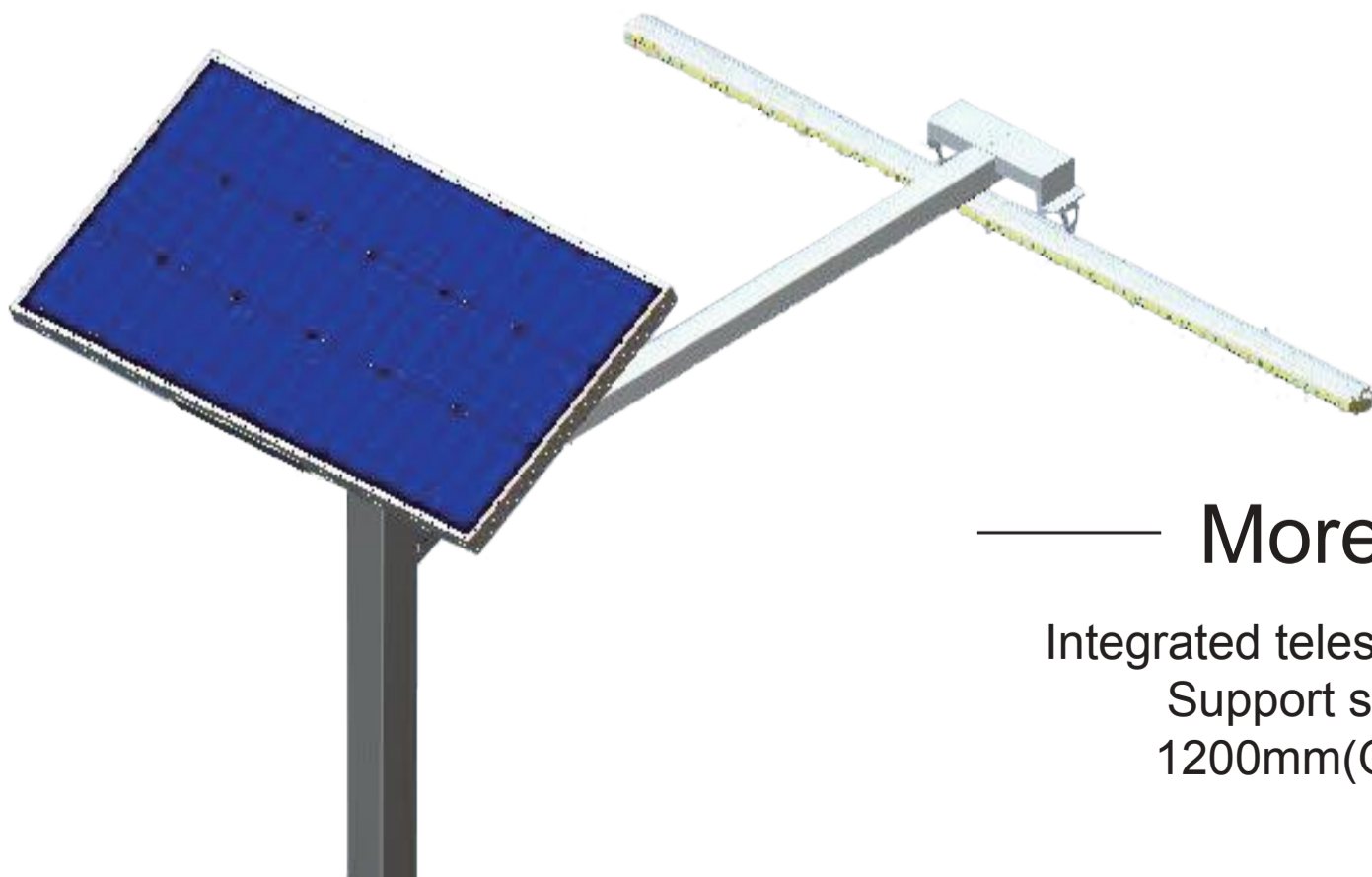
6hours = 1hrs 50% dim mode + 4hrs 100% full bright +1hrs 20% dim mode.

Model No.	Lighting Data Table	
LFB36W	Recommended billboard canvas height(m)	6-9m
	Eav (lx)	160-300lux
	Horizontal illumination interval(m)	2.5m

## Innovative Battery Protection System



- ◆ Built-in LiFePO4 class A battery, single cell with PTC
- ◆ Superior IC with military standards in battery protection board
- ◆ Waterproof, damp proof, explosion proof
- ◆ Over charging & over discharging protection



— More Flexible —

Integrated telescopic structure design  
Support square bar length  
1200mm(OEM is available)

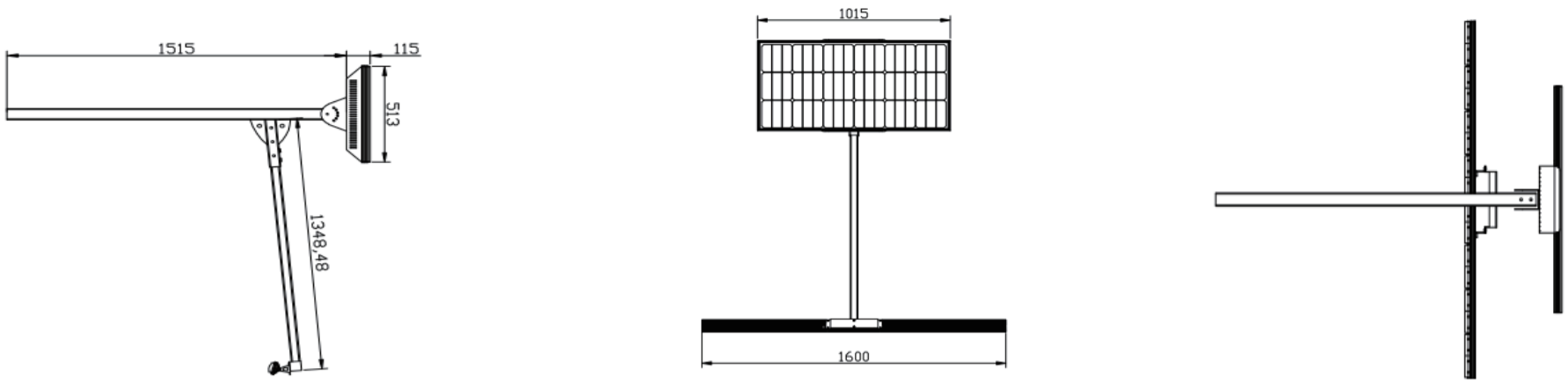
# Technical Data

## LFB Series All in One Technical Data

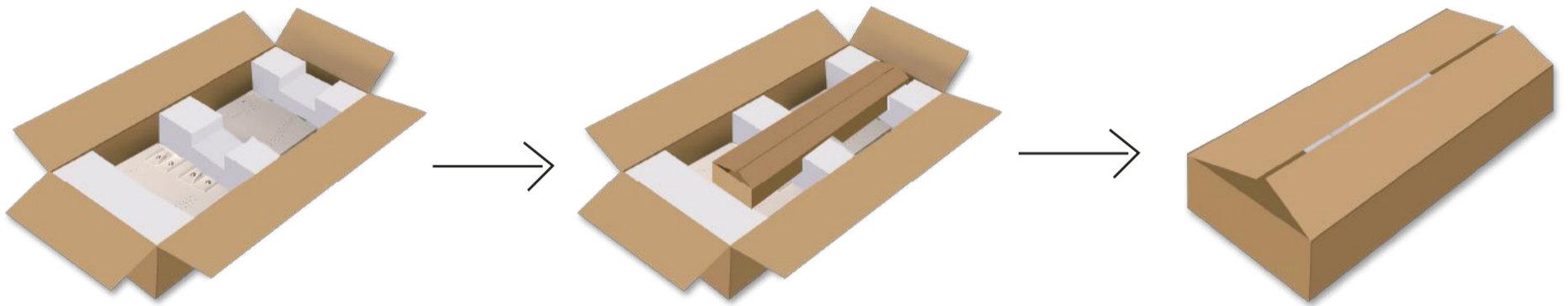
\* Packaging of 1 unit per carton

Model No.	LFB36W
Light Source Power	36W
Typical Luminous Flux (Lm)	5040LM
Luminous Efficiency	≥140Lm/W
Color Temperature (K)	6500-7000K
CPI	≥65
Power of PV Module (W)	80W/18V monocrystal
Battery Capacity (Ah)	33AH 12.8V
Working time(Hours)	4-6hours
Light Mode	Time Control: 6hours = 1hrs 50% dim mode + 4hrs 100% full bright +1hrs 20% dim mode
Working temperature	-20°~+60°
Working humidity	10%~90%
Lamp body and lamp cover material	Aluminum alloy 6063-T5/Q235/3003/PC
Waterproof level	IP65
Net weight (including installation parts)	35kg
Gross weight	40kg
Lamp body module size	1600*67*45mm
Length of light source module	1080mm
Light body package size	1650*355*180mm
Accessories Package size	1055*550*165mm

## Product Size



## Packaging Details



Model	Carton details (2 cartons)	Packaging size (mm)	Qty/Carton (set)	N.W (kg)	G.W (kg)	20"GP (set)	40"GP (set)	40"HQ (set)
LFB36W	Carton#1: lamp	1650*355*180mm	1	35	40	129	278	328
	Carton#2: Accessories	1055*550*165mm						