

LED Low Profile Wall Pack



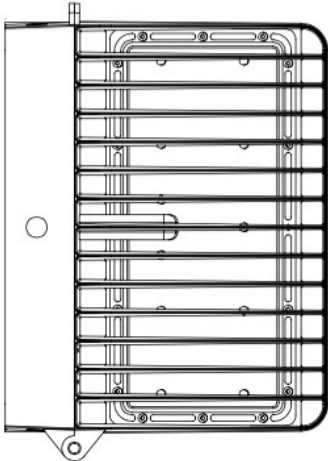
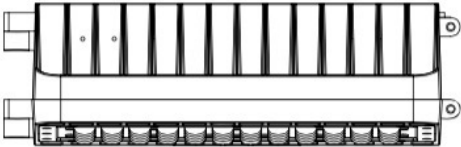
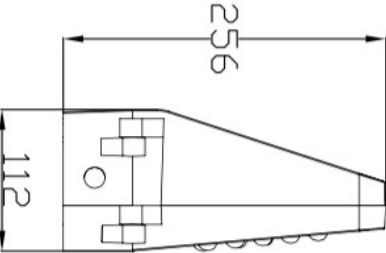
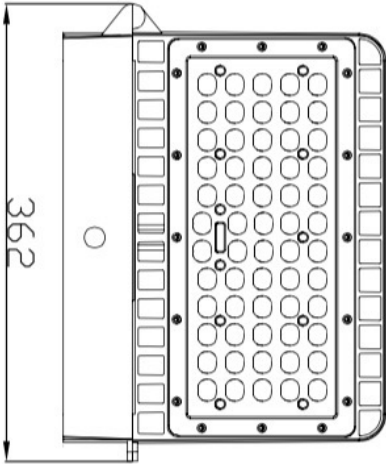
“Low Profile, really easy to install...” LED Today



Specifications

Wattage:	100W
Model Number:	AE-L-WPLP-100
DLC #:	YR-WL112-W100--(5000K)
DLC Partner:	YAORONG
ETL/cETL:	YES
Certifications:	
Voltage:	120-277V
Power Factor:	0.98
Frequency:	50/60Hz
Lumens Efficiency:	100LM/W
Kelvin (CCT):	4000K/5000K
CRI:	80+
IP Rating:	IP65
Lens:	PC
Materials:	Die Cast Aluminum
Finish:	Black (Default)
LM70 Life Time:	100,000
Dimming Availability:	Optional
Warranty:	5 Years
Temperature Range:	-34°C ~ 54°C (-30°F ~ 120°F)
Weight:	4.9KG 10.8LB
Replacement Wattage:	450W

Dimensions



User Guide

Note:

Please read this entire manual to fully understand and safely use the luminaire. The products can be used at the voltage of 100-277V AC, 50/60HZ, suitable for indoor and outdoor, moisture proof and dust proof. Specifications are subject to change without notice. Please visit www.altechefficiency.com for the most recent product information.

Unpacking:

1. Unpack and carefully examine the product.
2. Report any damage and save all packing materials if any part(s) were damaged during shipping.
3. Do not attempt to use the fixture if it is damaged.

Before You install:

1. Before installing any light fixtures, read and understand all cautions, warnings, instructions and product labels. Failure to do so can result in injury and/or void the warranty.
2. CONSULT A QUALIFIED ELECTRICIAN TO ENSURE CORRECT BRANCH CIRCUIT CONDUCTOR.
3. The product should be installed and operated by a qualified electrician or technician in accordance with relevant local codes.
4. Risk of electric shock. Ensure that main power source is off when wiring or soldering the sections of the product.

Maintenance:

1. Disconnect the product from the power supply prior to cleaning.
2. Use a dry or slightly moistened cloth for cleaning.
3. Never use any chemicals or abrasive materials for cleaning.

Installation Instructions:

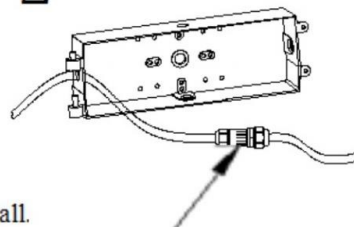


1



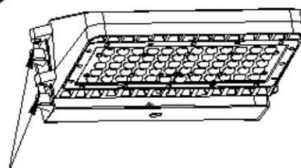
Using screws to install the power supply box onto the solid wall.

2



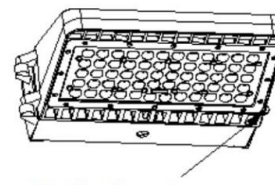
Open the wire-connector, connect the input wire, and then tighten the connector

3



Thrust the heat sink body into the holes of power supply box

4



Close the body using screws and tighten them