**Edge™****Edge LED High Bay**

For High Temp Application

50W~450W / 100V~277V

50W~450W / 200V~480V

FEATURES

- System Light Efficacy 130 LPW
- Flexible, Modular Design
- Multiple Choice of Optical Lenses
- Easy Installation & Maintenance
- IP66
- 3G Vibration Rating
- Five Years Warranty
- ETL, cETL, DLC

SPECIFICATIONS**PERFORMANCE**

LED Chip	Osram / Philips Lumileds
Color Temperature	4500~5500K (2500~5500K Optional)
CRI	≥70
Lumen Maintenance	L70> 100,000 Hours (Calculated Using Tm-21 Calculator)
Input Voltage	100-277 VAC 200-480 VAC Dimming Optional
Power Factor	0.95 Minimum
Surge Protection	12KV
IP Rating	IP66

ENVIRONMENTAL

Operating Temperature	-30 to 80°C (-22 to 176°F)
Storing Temperature	-40 to 80°C (-40 to 176°F)
Humidity	15% to 95% RH

PHYSICAL

Fixture Material	Aluminum Alloy
------------------	----------------

WARRANTY

5 Years

TYPICAL APPLICATIONS

- Heavy Industry
- High Temp Applications
- Indoor Sports Ground
- Car Dealership
- General Industrial Applications
- Warehouse
- Gymnasium

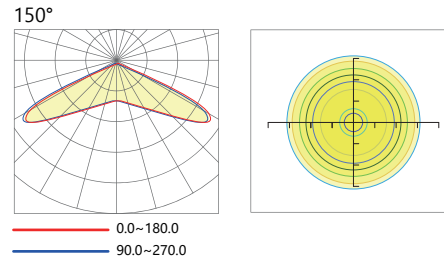
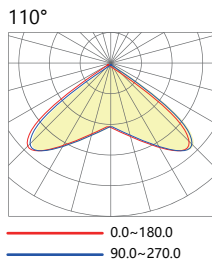
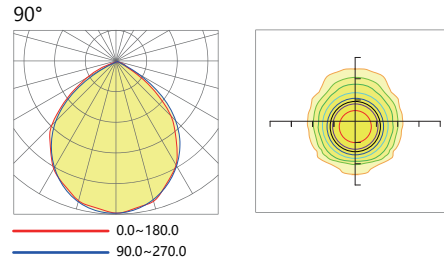
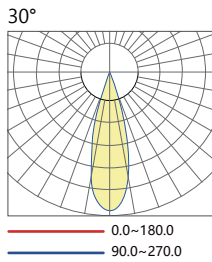


■ Specifications

Part#	Power	Equivalent	Total Lumen	N.W	Product Dimensions
EO-ED-50HT80	50W	150W HID	6500lm	5.2kg/11.5lbs	273x366x245mm 10.7x14.4x9.6in
EO-ED-100HT80	100W	250W HID	13000lm	7.8kg/17.2lbs	308x366x245mm 12.1x14.4x9.6in
EO-ED-150HT80	150W	400W HID	19500lm	9.3kg/20.5lbs	402x366x245mm 15.8x14.4x9.6in
EO-ED-200HT80	200W	750W HID	26000lm	10.7kg/23.6lbs	496x366x245mm 19.5x14.4x9.6in
EO-ED-300HT80	300W	1000W HID	39000lm	16.5kg/36.4lbs	684x366x245mm 26.9x14.4x9.6in
EO-ED-450HT80	450W	1500W HID	58500lm	28.0kg/61.7lbs	966x366x245mm 38.0x14.4x9.6in

■ Photometrics

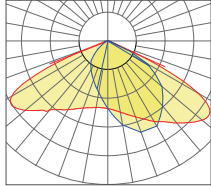
Round Light Spot



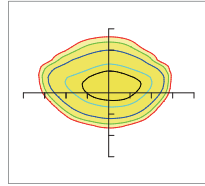
■ **Photometrics**

Rectangular Light Spot

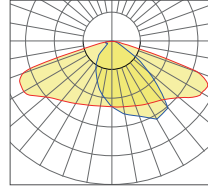
70 x 135°



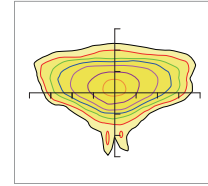
— 0.0~180.0
— 90.0~270.0



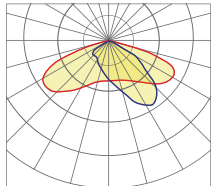
75 x 145°



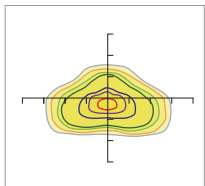
— 0.0~180.0
— 90.0~270.0



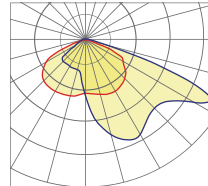
60 x 150°



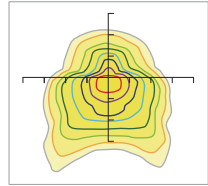
— 0.0~180.0
— 90.0~270.0



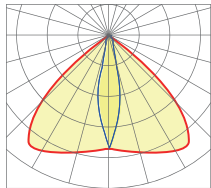
73 x 133°



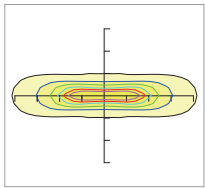
— 0.0~180.0
— 90.0~270.0



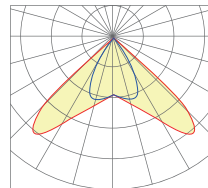
30x100°



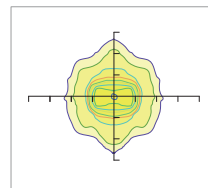
— 0.0~180.0
— 90.0~270.0



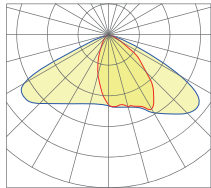
60 x 100°



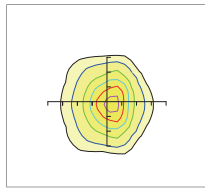
— 0.0~180.0
— 90.0~270.0





70 x 130°



— 0.0~180.0
— 90.0~270.0



■ Accessories

Image	Applicable Power	Product Code	Product Description
	50W~450W	SP-HR20	Hang Ring
	50W~450W	SP-BS	Universal Bracket(Standard)

■ Assembly Details

When It Is A High Bay



■ **Ordering Information**

