

CLP-BELL

LED Architectural Fixture

DESIGN - QUALITY



Crystal 
Lighting

CLP-BELL

Architectural LED Fixture



CLP-BELL, is ideal for locations such as Residential, Walkways, Perimeters, School Campuses, Industrial/Commercial Spaces, and any other Outdoor setting that is looking to create an inviting and sophisticated atmosphere. CLP-BELL has a Wide Light Distribution.

- 10 year/100,000 Hour Limited Warranty.

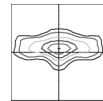
FEATURES

- Energy Savings: Over 60% compared to HID light sources.
- Utilizes high efficient Lumileds LED's.
- Operating temperatures: -30°C ~ 60°C.
- Driver: 0-10v dimmable programmable Phillips driver, 120-277v, 50/60Hz.
- Suitable for wet locations.
- 10Kv Surge Protector. (Standard)
- Operating Life: 200,000 hours (L70).

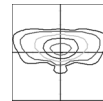
CONSTRUCTION.

- Housing, Heavy Gauge Spun Aluminum.
- Cast Aluminum top for additional support.
- Mounting (YM): Over 3" O.D Tenon or Pole.
- 3 Mill Powder Coat Finish.
- Clear Optic System.

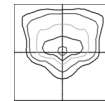
OPTIC DISTRIBUTION



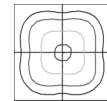
TYPE 2 (T2)



TYPE 3 (T3)



TYPE 4 (T4)



TYPE 5 (T5)

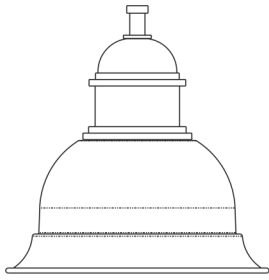
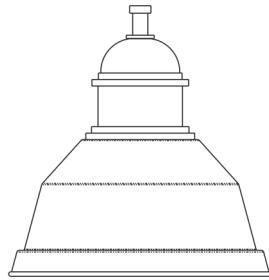
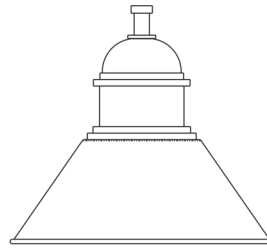
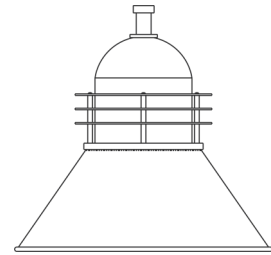
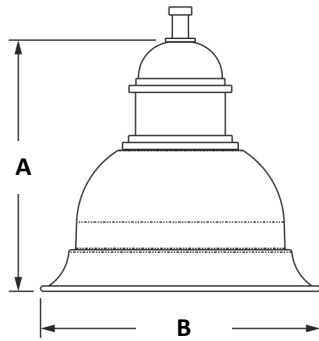
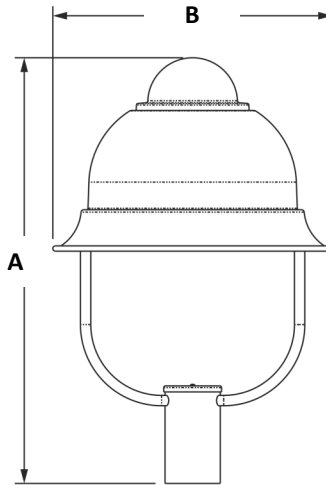
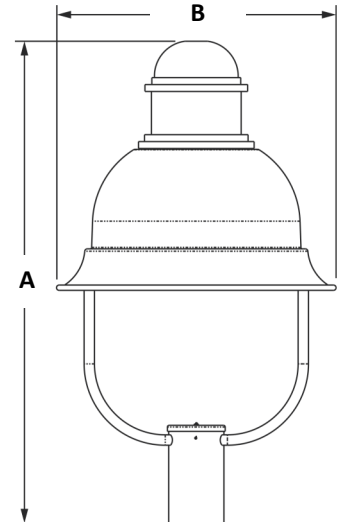
Example: (CLP-BELL-M-TP1-SH1-AM-T5-40CLED-30K-MV-BLK-OCC)



PHILIPS
LUMILEDS



Cat #	Top/Shade	Mounting	Type	Wattage	Color Temp.	Voltage	Color	Options
CLP-BELL-M	<u>TOP</u>	ARM MOUNT (AM)	TYPE 2 (T2)	40W (40CLED)	3000K (30K)	120-277V (MV)	BLACK (BLK)	OCCUPANCY SENSOR (OCC)
CLP-BELL-L	TOP 1 (TP1)	YOKE MOUNT (YM)	TYPE 3 (T3)	50W (50CLED)	4000K (40K)	480V (48)	WHITE (WH)	BUTTON PHOTO CELL (PC)
(SHADE 1 ONLY)	TOP 2 (TP2)	SIDE SLIP ARM (OVER 2" 3/8 ARM) (SSA)	TYPE 4 (T4)	60W (60CLED)	5000K (50K)		BRONZE (BRZ)	WIRELESS CONTROL (WC)
*180-200W	TOP 3 (TP3)		TYPE 5 (T5)	80W (80CLED)			SILVER (SIL)	HOUSE SIDE SHIELDS (HSS)
	<u>SHADES</u>			100W (100CLED)			GRAPHITE (GPH)	WATTAGE ADJUSTER (WA)
	SHADE 1 (SH1)			120W (120CLED)			MARINE GRADE (MG)	DECORATIVE RING (TOP 3 ONLY) (DR)
	SHADE 2 (SH2)			150W (150CLED)				
	SHADE 3 (SH3)			180W (180CLED)				
				200W (200CLED)				

**SH1****SH2****SH 3****SH3/TP3/ DR****ARM MOUNT****YOKE MOUNT-TP2****YOKE MOUNT-TP1****AVERAGE EPA**

CAT#	EPA
CLP-BELL-M-AM	1.38
CLP-BELL-M-PT1-YM	1.83
CLP-BELL-M-PT2-YM	1.59
CLP-BELL-L-AM	1.67
CLP-BELL-L-PT1-YM	2.14
CLP-BELL-L-PT2-YM	1.90

Dimensions

CAT#	A	B
CLP-BELL-M-AM	18"	20"
CLP-BELL-M-PT1-YM	37" 3/8	20"
CLP-BELL-M-PT2-YM	31" 7/8	20"
CLP-BELL-L-AM	20"	25"
CLP-BELL-L-PT1-YM	38" 7/8	25"
CLP-BELL-L-PT2-YM	33" 3/8	25"

Cat #	Input Power	Lumen Output	LPW	Color Temp. (CCT)	CRI	Rated Life (L70)	Input Voltage	Input Frequency	HID Equivalent
CLP-BELL-M-40CLED	40W	5,504	122	5000K	70+	>200,000	120-277V	50/60HZ	70w HPS
CLP-BELL-M-50CLED	50W	6,880	125	5000K	70+	>200,000	120-277V	50/60HZ	100w MH
CLP-BELL-M-60CLED	60W	8,256	127	5000K	70+	>200,000	120-277V	50/60HZ	150w PSMH
CLP-BELL-M-80CLED	80W	9,590	119	5000K	70+	>200,000	120-277V	50/60HZ	175w HPS
CLP-BELL-M-100CLED	100W	12306	123	5000K	70+	>200,000	120-277V	50/60HZ	250W PSMH
CLP-BELL-M-120CLED	120W	16012	133	5000K	70+	>200,000	120-277V	50/60HZ	310w HPS
CLP-BELL-M-150CLED	150W	19098	127	5000K	70+	>200,000	120-277V	50/60HZ	400w PSMH
CLP-BELL-L-180CLED	180W	23429	130	5000K	70+	>200,000	120-277V	50/60HZ	500WPSMH
CLP-BELL-L-200CLED	200W	26686	137	5000K	70+	>200,000	120-277V	50/60HZ	750WPSMH

All products are proudly manufactured and/or assembled in the USA