

Bulb Dimensions

Wattage	M.O.L.	W	L
40W	3.00 in.	5.00 in.	7.50 in.
80W	3.50 in.	5.50 in.	12.50 in.
100W	3.50 in.	5.50 in.	12.50 in.
120W	3.50 in.	5.50 in.	12.50 in.
150W	3.50 in.	6.00 in.	16.50 in.
200W	4.00 in.	6.25 in.	18.50 in.
250W	4.00 in.	6.25 in.	20.50 in.

Incredible **100,000 hrs**

GENERAL DESCRIPTION

Neptun's Induction rectangle bulb retrofit kits are designed for replacing existing HID systems in indoor and outdoor lighting fixtures. The NIRT series kit is offered in a variety of wattages and the universal mounting position makes it an excellent choice for a variety of applications. It can replace existing HID & HPS lighting systems up to 400W.

APPLICATION

- Canopy Fixtures
- Shoebox Fixtures
- Wall Pack Fixtures
- Flood Light Fixtures
- Area Lighting Fixtures

STRUCTURE, MATERIALS, & FEATURES

- Inductively coupled rectangular induction bulb.
- High power factor, low THD electronic ballast with surge protection.
- Bulb supplied with 2 leg mounting arms.
- Teflon coated wiring protected from moisture, dust, heat, & cold.
- Instant-On flicker-free Cold Start and Hot Re-Start.
- Amalgam technology with very low mercury content. (Less than 4 mg)
- High quality glare-free light with high CRI (83).
- Bright white light (5000°K) for greater visibility and safety.
- Advance phosphors for high lumen output and high lumen maintenance.
- Up to 20 year maintenance free operation.
- 5 Year System Warranty.

ORDERING INFORMATION

Sample Number: NIRT-040RK-UNV-850
Custom options and accessories available. Please consult factory

Type	Lamp Wattage	System	Voltage	Color Temp
NIRT = Rectangle Type	040 = 40 W 080 = 80 W 100 = 100 W 120 = 120 W 150 = 150 W 200 = 200 W 250 = 250 W	RK = Retrofit Kit * Bulb & Ballast	UNV = 120-277 VAC 347V = 347 VAC * 480V = 480 VAC * * Uses Separate Step-Down Transformer	830 = 3000°K 841 = 4100°K 850 = 5000°K * * Standard



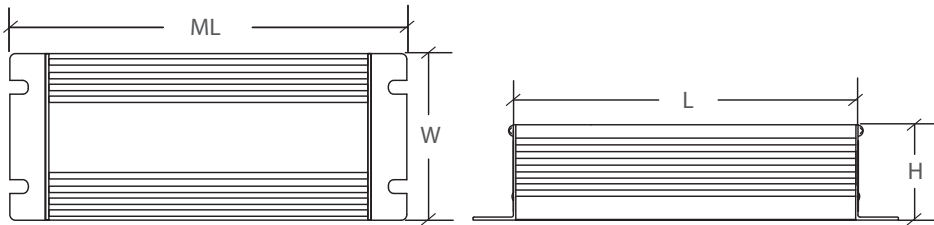
PRODUCT INFORMATION

Model No.	Description	Rated Watts	Input Watts	Initial Lumens	Universal Line Voltage (VAC)	Max Line Current (Amp) @ 120 - 277	THD	Power Factor	Weight
NIRT-040RK-UNV	Rectangular RetroFit Kit	40	41	3,200	120-277	0.35-0.15	<10%	0.98	3 lbs.
NIRT-080RK-UNV	Rectangular RetroFit Kit	80	82	6,400	120-277	0.69-0.30	<10%	0.98	3 lbs.
NIRT-100RK-UNV	Rectangular RetroFit Kit	100	105	8,000	120-277	0.87-0.37	<10%	0.98	3 lbs.
NIRT-120RK-UNV	Rectangular RetroFit Kit	120	125	9,600	120-277	1.05-0.45	<10%	0.98	4 lbs.
NIRT-150RK-UNV	Rectangular RetroFit Kit	150	158	12,000	120-277	1.31-0.56	<10%	0.98	4 lbs.
NIRT-200RK-UNV	Rectangular RetroFit Kit	200	210	16,000	120-277	1.75-0.75	<10%	0.98	5 lbs.
NIRT-250RK-UNV	Rectangular RetroFit Kit	250	265	20,000	120-277	2.18-0.94	<10%	0.98	5 lbs.

SPECIFICATIONS

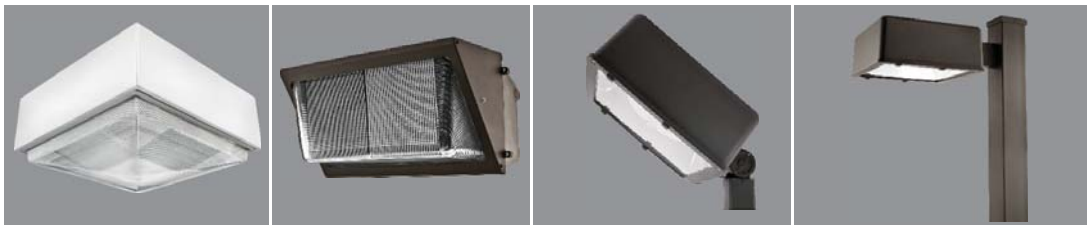
- Ballast Type Electronic
- Start Method InstantON
- Hot Re-start InstantON
- Input Line Voltage 120-277 VAC
- Input Line Frequency 50/60 Hz
- Lamp Operating Frequency 250 kHz
- Ballast Off-State Draw 0 Watts
- Sound Rating Class A
- ANSI Surge Protection Class A
- Lamp / Ballast System Life 100,000 Hrs.
- Lumen Maintenance @75,000Hrs > 70%
- Color Temperature 5000°K
- Color Rendering Index (CRI) 83
- Minimum Starting Temperature -20°F
- Maximum Starting Temperature 160°F
- Lumens per Watt 80
- Shock / Vibration Resistant Yes
- Power Factor > 0.98
- Total Harmonic Distortion < 10%
- Inrush Current Peak < 10 Amp
- ETL Listed / UL Standard 1598 Yes
- FCC Compliance Part 18, Subp. C

BALLAST DIMENSIONS



Wattage	M.L.	W	L	H
40W	6.00 in.	3.00 in.	5.25 in.	1.75 in.
80W	6.00 in.	3.00 in.	5.25 in.	1.75 in.
100W	6.00 in.	3.00 in.	5.25 in.	1.75 in.
120W	7.50 in.	4.50 in.	6.25 in.	2.00 in.
150W	7.50 in.	4.50 in.	6.25 in.	2.00 in.
200 W	7.50 in.	4.50 in.	6.25 in.	2.00 in.
250 W	7.50 in.	4.50 in.	6.25 in.	2.00 in.

RECOMMENDED APPLICATION FIXTURES



* Contact Factory for Application Verification.