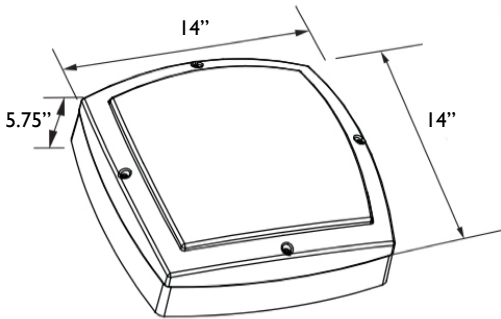


CANOPY.R

All products feature Noribachi's exclusive Bespoke Engineered and Specifically Tailored (BEST) manufacturing methodology.

CATALOG #:	TYPE:
PROJECT:	
COMMENTS:	DATE:
PREPARED BY:	

PRODUCT



Product Information

The Canopy.R is a durable, cost-effective and low-maintenance LED lighting solution.

This LED lighting fixture features die-cast aluminum housing and an open front frame for easy access.

Applications: Parking Garages, Underpasses, Walkways and large indoor and outdoor lighting applications.

Performance Summary

Lumens Range: 3,129lm – 13,293lm
 Lumens Per Watt (Typical): 141
 CRI: Minimum 70 CRI. Custom CRI available upon request.
 CCT (Typical): 3000K, 4000K, 5700K
 Manufactured in the U.S. with parts from U.S. and imported.

Fixture Information

Housing: Bronze
 Lens: Opalescent Polycarbonate
 Mounting: Surface
 Diffusion: None

Specifications

CSA Listed: Wet Locations
 Length: 14"
 Width: 14"
 Height: 5.75"

Electrical System Characteristics / Data

Standard AC input: 120-277 VAC
 EMI filter: 47CFR, part 2, part 15
 Power factor: >.9
 Total harmonic distortion: <20%
 Surge protection: IEC/EN 61000-4-5 EMC test standard

Electrical characteristics and performance data verified by independent 3rd party testing lab. For full reports and results, visit www.noribachi.com/reports.

Ordering Information Sample Catalog Number: HEX-063-WW-B-MT-CAR						
LIGHT ENGINE	DRIVE CURRENT	COLOR TEMPERATURE	VOLTAGE	FIXTURE CODE	OPTIONAL UPGRADES	OPTIONAL BEAM SPREAD AND TYPE DISTRIBUTION
HEX-021 HEX-021 HEX-042 HEX-042 HEX-063 HEX-063	A B A B A B	CW – COOL WHITE (5700K TYPICAL) NW – NEUTRAL WHITE (4000K TYPICAL) WW – WARM WHITE (3000K TYPICAL)	MT	CAR – CANOPY.R	PC1 – 120V BUTTON PHOTOCELL PC2 – 208-277V BUTTON PHOTOCELL EM – EMERGENCY BATTERY BACKUP, 5W, 600 LUMENS, 90 MINUTES* EMC – EMERGENCY BATTERY BACKUP, COLD 23W, 2000, 90 MINUTES* COL-[RAL] – CUSTOM COLOR COAT – CUSTOM COAT EPOXY – EPOXY COATING SGR1 – 100V -277V SURGE PROTECTOR SGR2 – 480V SURGE PROTECTOR 010V – 1-10V DIMMING FUNCTIONALITY STEP – STEP DIMMING FUNCTIONALITY *MUST PROVIDE EXACT VOLTAGE REQUIREMENT	80D – OPTIONAL 80° BEAM SPREAD T1 – OPTIONAL TYPE 1 DISTRIBUTION T2 – OPTIONAL TYPE 2 DISTRIBUTION T3 – OPTIONAL TYPE 3 DISTRIBUTION T4 – OPTIONAL TYPE 3 DISTRIBUTION TRS or TLS – OPTIONAL RIGHT OR LEFT SLANTED DISTRIBUTION

Warranty: Five-Year Limited Warranty, Optional 10-Year Manufacturer's Warranty Available. Full Warranty Terms Available At www.noribachi.com/products/warranty

WHEN APPROVED, THE SPECIFICATIONS OUTLINED IN THIS SPEC SHEET SHALL BECOME THE SPECIFICATION FOR THE MATERIAL TO BE DELIVERED BY NORIBACHI ON THE CITED PROJECT. AN AMENDED SPEC SHEET CAN BE PROVIDED BUT ONLY AFTER WRITTEN APPROVAL BY THE CUSTOMER IS RECEIVED. THIS DOCUMENT IS THE PROPERTY OF NORIBACHI AND CAN ONLY BE USED IN CONNECTION WITH MATERIALS FURNISHED BY NORIBACHI. ©2015



CANOPY.R

All products feature Noribachi's exclusive Bespoke Engineered and Specifically Tailored (BEST) manufacturing methodology.

CATALOG #:	TYPE:
PROJECT:	
COMMENTS:	DATE:
PREPARED BY:	

ELECTRICAL

Construction

Die-cast aluminum housing with textured powdercoat finish over a chromate conversion coating gasket. Features open front frame for easy access.

Optics

High brightness, high efficiency LEDs. Color temperature options include Cool White (5700K typical), Neutral White (4000K typical) Warm White (3000K typical) with minimum 70 CRI. Custom RGBW colors available. 120° beam angle standard. Optional 80° beam angle available.

Controls

Optional controls include 120V Button Photocell (PC1) and 208-277V Button Photocell (PC2). Emergency Battery Backup (EM) and Emergency Battery Backup Cold (EMC). 100-722V (SGR1) and 480V (SGR2) Surge Protectors. 0-10V (O10V) and Step (STEP) Dimming functionality.

Mounting

Surface mounting available for this fixture.

Driver

Available in A (350mA) drive current and B drive current (525 mA). Highly reliable. Suitable for dry, damp and wet locations. Compliant to worldwide safety regulations for lighting.

Testing Compliance

UL 1598 Issued: 2008/09/17 Ed:3 Rev:2012/10/17 UL Standard for Safety Luminaires CSA C22.2#250.0 Issued: 2008/09/17 Ed:3 Luminaires; General Instruction No.1 2010/01/11, General Instruction No. 2 2012/10/17.

Electrical System

Surge protection meets 10KV/5KA per ANSI/IEEE62.41. Driver meets maximum harmonic distortion (THD) of 20% and is ROHS compliant. Power Factor = > 0.9.

Ambient Temperature

-40°C to +65°C (-40°F to + 149°F).

Electrical Load					
LIGHT ENGINE	DRIVE	DRIVE CURRENT (AMPS@120V)	DRIVE CURRENT (AMPS@277V)	DRIVE CURRENT (AMPS@480V)	SYSTEM POWER* (WATTS)
HEX-021	A	0.18	0.08	0.04	21.03
HEX-021	B	0.26	0.11	0.07	31.46
HEX-042	A	0.35	0.15	0.09	42.13
HEX-042	B	0.53	0.23	0.13	63.02
HEX-063	B	0.79	0.34	0.20	94.70

*Ideal Wattage

Operating Characteristics (Typical @5700K CCT)				
LIGHT ENGINE	DRIVE	LUMENS (T5)	INPUT POWER (WATTS)	LUMENS PER WATT
HEX-021	A	3,129	21.03	148.81
HEX-021	B	4,431	31.46	140.87
HEX-042	A	6,258	42.13	148.55
HEX-042	B	8,862	63.02	140.67
HEX-063	B	13,293	94.70	140.38

Manufacturing

Manufactured in beautiful Harbor City, CA. ARRA Compliant. NAFTA Compliant. Test and burn-in of 100% of all luminaires before shipment. No less than 8-years experience in manufacturing LED-based products.

Note

Specifications subject to change without notice. Actual performance may differ as a result of end-user environment application. Actual wattage may differ by +/- 8%.

WHEN APPROVED, THE SPECIFICATIONS OUTLINED IN THIS SPEC SHEET SHALL BECOME THE SPECIFICATION FOR THE MATERIAL TO BE DELIVERED BY NORIBACHI ON THE CITED PROJECT. AN AMENDED SPEC SHEET CAN BE PROVIDED BUT ONLY AFTER WRITTEN APPROVAL BY THE CUSTOMER IS RECEIVED. THIS DOCUMENT IS THE PROPERTY OF NORIBACHI AND CAN ONLY BE USED IN CONNECTION WITH MATERIALS FURNISHED BY NORIBACHI. ©2015



CANOPY.R

All products feature Noribachi's exclusive Bespoke Engineered and Specifically Tailored (BEST) manufacturing methodology.

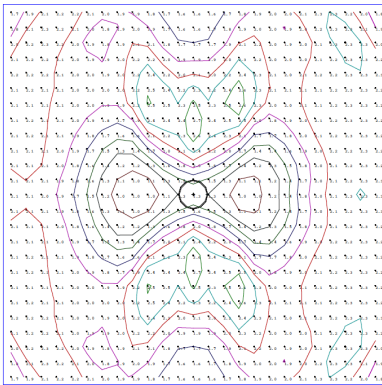
CATALOG #:	TYPE:
PROJECT:	DATE:
COMMENTS:	
PREPARED BY:	

PERFORMANCE / DISTRIBUTION

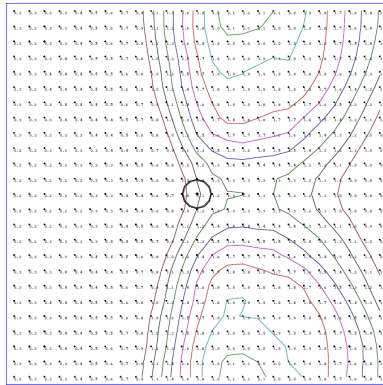
Power And Lumens By Light Engine							
DISTRIBUTION							
LIGHT ENGINE	DRIVE	CCT	T1 (LUMENS)	T2 (LUMENS)	T3 (LUMENS)	T4 (LUMENS)	T5 (LUMENS)
HEX-021	A	5700	3,075	2,436	2,430	2,816	3,129
HEX-021	B	5700	4,354	3,450	3,441	3,988	4,431
HEX-042	A	5700	6,149	4,872	4,860	5,632	6,258
HEX-042	B	5700	8,708	6,900	6,883	7,976	8,862
HEX-063	B	5700	13,062	10,349	10,324	11,964	13,293

**Type Distribution
HEX-063**

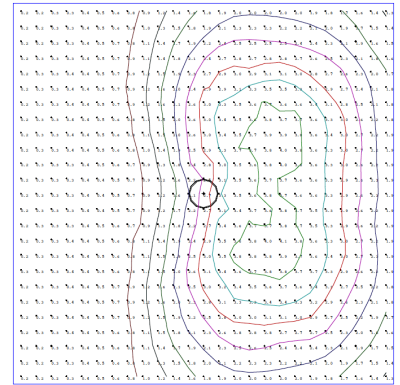
T-1



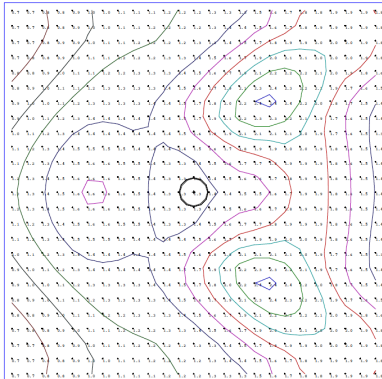
T-2



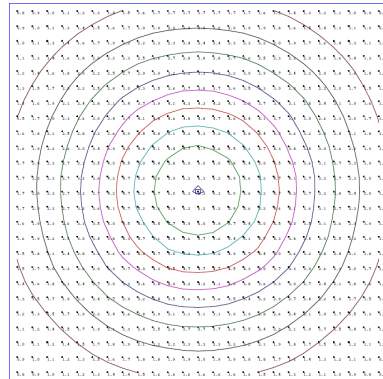
T-3



T-4



T-5



Distribution

- 120° Standard Beam Spread.
- 80° Optional Beam Spread Available.
- Other Light Engine Type Distribution available upon request.

WHEN APPROVED, THE SPECIFICATIONS OUTLINED IN THIS SPEC SHEET SHALL BECOME THE SPECIFICATION FOR THE MATERIAL TO BE DELIVERED BY NORIBACHI ON THE CITED PROJECT. AN AMENDED SPEC SHEET CAN BE PROVIDED BUT ONLY AFTER WRITTEN APPROVAL BY THE CUSTOMER IS RECEIVED. THIS DOCUMENT IS THE PROPERTY OF NORIBACHI AND CAN ONLY BE USED IN CONNECTION WITH MATERIALS FURNISHED BY NORIBACHI. ©2015



CANOPY.R

All products feature Noribachi's exclusive Bespoke Engineered and Specifically Tailored (BEST) manufacturing methodology.

CATALOG #:

TYPE:

PROJECT:

COMMENTS:

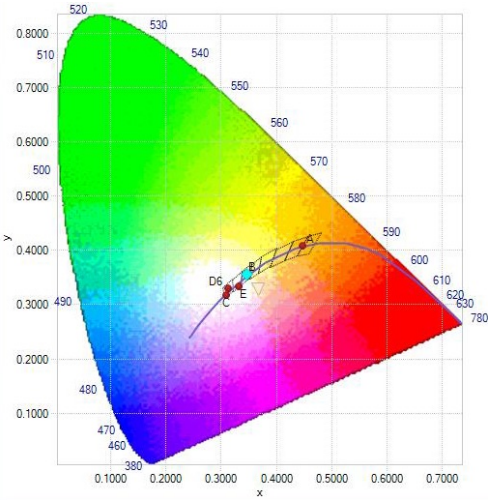
DATE:

PREPARED BY:

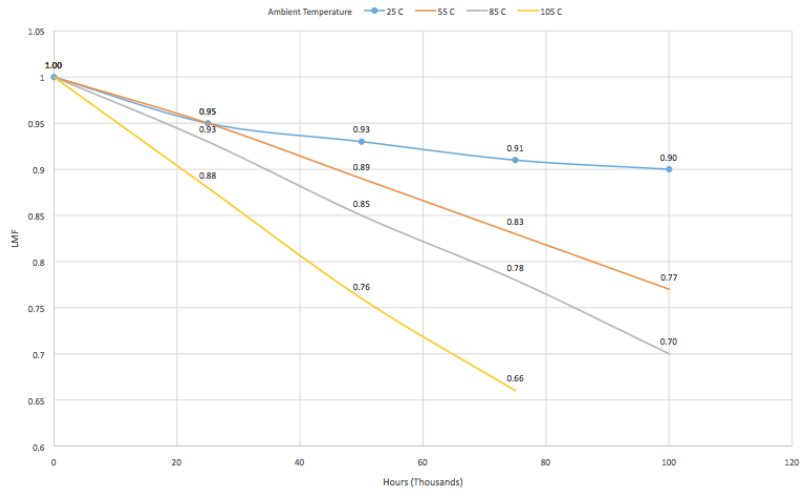
PERFORMANCE / DISTRIBUTION

CIE LUV BINNING CURVE

LIN-140 CIE 1932 - 2 Degree



Lumen Depreciation Chart



Lumen Maintenance Factors (B Drive)

AMBIENT	INITIAL LMF	25K HR PROJECTED LMF	50K HR PROJECTED LMF	75K HR PROJECTED LMF	100K HR PROJECTED LMF
25°C	1.00	0.95	0.93	0.91	0.90
55°C	1.00	0.95	0.89	0.83	0.77
85°C	1.00	0.93	0.85	0.78	0.70
105°C	1.00	0.88	0.76	0.66	n/a

Each temperature has an independent initial value. In accordance with IESNA TM021011, Projected Values represent interpolated value based on time durations that are within six times (6X) the IESNA LM-80-08 total test duration (in hours) for the device under testing (DUT) i.e. the packaged LED chip). In accordance with IESNA TM-21-11, Calculated Values represent time durations that exceed six times (6X) the IESNA LM-80-08 total test duration (in hours) for the device under testing (DUT) i.e. the packaged LED chip)

Luminaire EPA Chart

	Single	0.5
	ND-180°	1.0
	ND-90°	0.8
	NT-90°	1.7
	NT-120°	1.7
	NQ-90°	1.9

Note: Mounting changes fixture EPA. Please contact Noribachi for additional information.

Lumen Multiplier

AMBIENT TEMPERATURE	LUMEN MULTIPLIER
10°C	1.032
15°C	1.021
25°C	1.000
40°C	0.968
50°C	0.946

WHEN APPROVED, THE SPECIFICATIONS OUTLINED IN THIS SPEC SHEET SHALL BECOME THE SPECIFICATION FOR THE MATERIAL TO BE DELIVERED BY NORIBACHI ON THE CITED PROJECT. AN AMENDED SPEC SHEET CAN BE PROVIDED BUT ONLY AFTER WRITTEN APPROVAL BY THE CUSTOMER IS RECEIVED. THIS DOCUMENT IS THE PROPERTY OF NORIBACHI AND CAN ONLY BE USED IN CONNECTION WITH MATERIALS FURNISHED BY NORIBACHI. ©2015



CANOPIY.R

All products feature Noribachi's exclusive Bespoke Engineered and Specifically Tailored (BEST) manufacturing methodology.

CATALOG #:	TYPE:
PROJECT:	
COMMENTS:	DATE:
PREPARED BY:	

OPTIONAL UPGRADES

BUTTON PHOTOCELL 110V-130V

ORDER CODE: PCI

Appearance And Specifications:

- Rain Tight For Outdoor Use
- 12" Leads
- Thermal Switch
- Polycarbonate Enclosure & Eye
- ½" CdS Photocell
- 3/8" – 19 Thread Nipple with Rubber Gasket & Plastic Lock-Nut



EMERGENCY BATTERY BACKUP

ORDER CODE: EM

Appearance And Specifications:

- Rain Tight For Outdoor Use
- 5W, 600 Lumens, 90 Minutes
- Must provide exact voltage requirements in order code



BUTTON PHOTOCELL 208V-277V

ORDER CODE: PC2

Appearance And Specifications:

- Rain Tight For Outdoor Use
- 12" Leads
- Thermal Switch
- Polycarbonate Enclosure & Eye
- ½" CdS Photocell
- 3/8" – 19 Thread Nipple with Rubber Gasket & Plastic Lock-Nut



EMERGENCY BATTERY BACKUP COLD

ORDER CODE: EMC

Appearance And Specifications:

- 23W, 2000 Lumens, 90 Minutes
- Must provide exact voltage requirements on order code



DIMMING

ORDER CODE: 010V

ORDER CODE: STEP

Appearance And Specifications:

- 010V = 1 – 10V Dimming Functionality
- STEP = Step Dimming Functionality
- *Compatibility not guaranteed for any particular dimmable light in any particular installation.



SURGE PROTECTOR

ORDER CODE: SGRI

ORDER CODE: SGR2

Appearance And Specifications:

- 100V - 120V Surge Protector
- 480V Surge Protector



WHEN APPROVED, THE SPECIFICATIONS OUTLINED IN THIS SPEC SHEET SHALL BECOME THE SPECIFICATION FOR THE MATERIAL TO BE DELIVERED BY NORIBACHI ON THE CITED PROJECT. AN AMENDED SPEC SHEET CAN BE PROVIDED BUT ONLY AFTER WRITTEN APPROVAL BY THE CUSTOMER IS RECEIVED. THIS DOCUMENT IS THE PROPERTY OF NORIBACHI AND CAN ONLY BE USED IN CONNECTION WITH MATERIALS FURNISHED BY NORIBACHI. ©2015

