

BRIGHT-C Series

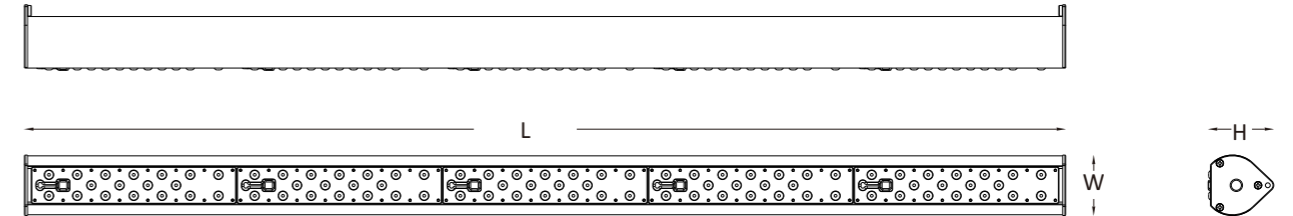


BRIGHT-C redefines how you think about LED linear light. It provides unmatched illumination performance and significant energy savings with modular and stylish design.

FEATURES & BENEFITS

- Innovative modular design.
- IP67 rated.
- Surface or suspended mount.
- Integrated heat sink directly from the housing.
- Corrosion resistant polyester powder coating.
- Multiple units are linkable.
- A wide variety of optical distributions.
- Easy installation saves time and labor cost.
- With 1 - 10V dimming makes this product perfect for indoor or industrial applications.

DIMENSIONAL DRAWING



TECHNICAL PARAMETERS

Power	60-150W
Input	120-277VAC or 220-240VAC or 347-480 VAC
PF	>0.95
THD	<20% (120-277VAC)/<10% (220-240VAC)
L85	>60,000H
Operating Temperature	-40°C ~ +50°C
Typical Efficacy	100lm/W or 110lm/W or 120lm/W
ANSI CCT	3000K/4000K/5000K/5700K
Min CRI	70* or 80 or 85

* Standard

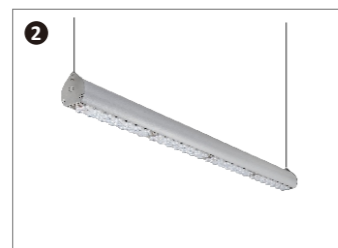
IP Rating	IP67
SPD	Optional
Certificate	UL/ CUL/ DLC/ LM79 /CB/CE / RoHS
DALI	Optional
0-10V	Optional
Photocell	/
Smart Control	/
Optic (IESNA)	Type I, Type II, Type III, Type IV, Type V
Color Option	Grey

APPLICATIONS

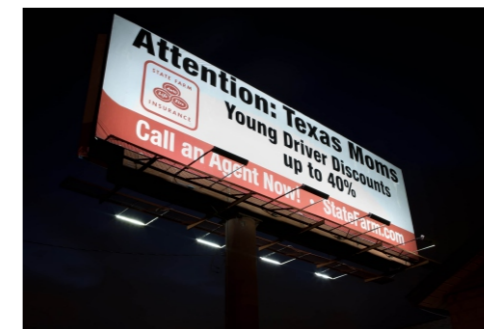
- Industrial & Commercial lighting



Surface Mount



Suspension Mount



USA



Spain

BRIGHT-C Series

BRIEF SPECIFICATIONS

Model No.	System Power	LED Modules	LEDs	Net Weight	Gross Weight	Dimensions (L x W x H)	Carton Dimensions (L x W x H)	Luminous Flux		Efficacy* (lm/W)
								3000K	4000K/5000K	
BLC: 120-277VAC or 220-240VAC										
BLC60	60W	2	36	3.37kg(4.43lbs)	4.27kg(9.41lbs)	566 x 80.6 x 87.6(mm) 22.28" X 3.17" X 3.42"	596 x 96 x 117(mm) 23.46" X 3.78" X 4.61"	6143 lm	6902 lm	114
BLC90	90W	3	54	4.24kg(9.35lbs)	5.34kg(11.77lbs)	840.5 x 80.6 x 87.6(mm) 33.09" X 3.17" X 3.42"	870.5 x 96 x 117(mm) 34.27" X 3.78" X 4.61"	8884 lm	9982 lm	115
BLC120	120W	4	72	4.9kg(10.8lbs)	6.1kg(13.45lbs)	1115 x 80.6 x 87.6(mm) 43.9" X 3.17" X 3.42"	1145 x 96 x 117(mm) 45.08" X 3.78" X 4.61"	11906 lm	13377 lm	120
BLC150	150W	5	90	5.57kg(12.28lbs)	6.87kg(15.15lbs)	1389.5 x 80.6 x 87.6(mm) 54.7" X 3.17" X 3.42"	1419.5 x 96 x 117(mm) 55.89" X 3.78" X 4.61"	14838 lm	16672 lm	118

*CCT 4000K/5000K/5700K

ORDERING INFORMATION

MODEL (Nominal Power)	OPTIC LENS	CCT (ANSI)	OPTIONAL COLOR	LIGHTING CONTROL	
BLC60 60W	T1M Type I Medium	30K 3045	GR Grey (RAL:7004)	00 Not required	
	BLC90 90W	T2M Type II Medium			±175K
	BLC120 120W	T3M Type III Medium			40K* 3985
	BLC150 150W	T3L Type III Long			±275K
		T4S Type IV Short			50K* 5028
		T5U Average beam angle 10°			±283K
		T5V Average beam angle 25°			57K 5665
		T5W Average beam angle 40°			±355K
		T5S Average beam angle 60°			
		T5M Average beam angle 90°			
		T5L Average beam angle 120°			
		T5D Diffuser			

* In Stock

- Example 1: BLC60-T1M-30K-GR-00
- Example 2: BLC90-T5U-40K-GR-04
- Example 3: BLC120-T5V-50K-GR-05