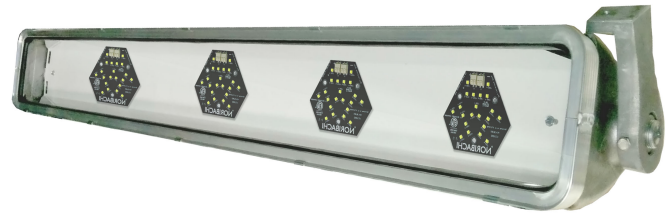


- ✓ Class I, Division 2- Group A, B, C & D
- ✓ UL 844 & 595
- ✓ Meets Coast Guard Specifications



Fixture Appearance

- Durable Tempered Glass Lens

Electrical Characteristics

- Standard AC input: 120-277 VAC
- EMI filter: 47CFR, part 2, part 15
- Power factor: >.9
- Total harmonic distortion: <20%
- Surge protection: IEC/EN 61000-4-5 EMC test standard

LED Light Engine Characteristics

- L70 Rated life of 100,000+ hours
- Minimum CRI: 70
- Operating temp: -40° C to +65° C
- No toxic chemicals/ROHS compliant
- ETL certified, meets UL and CSA standards
- 50-90% energy savings
- Manufactured in the USA

Accessories

- Beam Clamp
- Shock Mount
- Safety Cable

Applications

- Petrochemical Facilities
- Lubrication Pits
- Oil Drilling Rigs
- Crew Quarters
- Solvent and Cleaning Areas
- Processing Plants
- Water Treatment Areas
- Marine Loading Docks

Warranty

- 5-year manufacturer's warranty
- U.S. manufacturing and quality control

Installation

- Licensed electrician required
- Contact Noribachi for additional support

Catalog Numbering System

FIXTURE	LIGHT ENGINE	COLOR	VOLTAGE	DISTRIBUTION	MOUNT	ACCESSORIES
NHS07	126	CW	MT	120D	BRK	SM

Light Engine

021	4,480 Lumens @ 32W
042	8,820 Lumens @ 63W
063	13,300 Lumens @ 95W
084	17,640 Lumens @ 126W
105	22,120 Lumens @ 158W
126	26,460 Lumens @ 189W

Distribution

120D	120° Beam
80D	80° Beam
40D	40° Beam

Mount

BRK	Standard Adjustable Bracket
------------	-----------------------------

Color Temperature

WW	Warm White
NW	Neutral White
CW	Cool White
CC	Custom Color and/or Custom CRI

Accessories

SM	Shock Mount
BC	Beam Clamp
SC	Safety Cable

Voltage

MT	Multi-Tap : Up to 277 VAC
347	347 VAC
480	480 VAC

Dimensions

