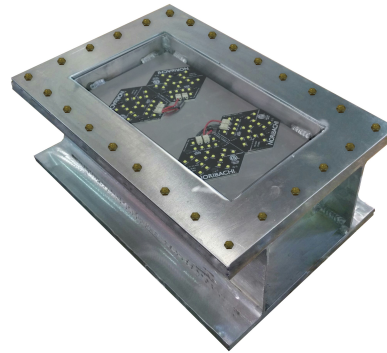


- ✓ Class I, Division 1
- ✓ UL 844
- ✓ UL 1598



Fixture Appearance

- Durable Tempered Glass Lens
- Aluminum 6062 Housing
- Stainless Steel Hardware

Electrical Characteristics

- Standard AC input: 120-277 VAC
- EMI filter: 47CFR, part 2, part 15
- Power factor: >.9
- Total harmonic distortion: <20%
- Surge protection: IEC/EN 61000-4-5 EMC test standard

LED Light Engine Characteristics

- L70 Rated life of 100,000+ hours
- Minimum CRI: 70
- Operating temp: -40° C to +65° C
- No toxic chemicals/ROHS compliant
- ETL certified, meets UL and CSA standards
- 50-90% energy savings
- Manufactured in the USA

Applications

- Petrochemical Facilities
- Solvent and Cleaning Areas
- Lubrication Pits
- Processing Plants
- Oil Drilling Rigs
- Water Treatment Plants
- Paint Manufacturing Plants
- Marine Loading Docks

Warranty

- 5-year manufacturer's warranty
- U.S. manufacturing and quality control

Installation

- Licensed electrician required
- Contact Noribachi for additional support

Catalog Numbering System

FIXTURE	LIGHT ENGINE	COLOR	VOLTAGE	DISTRIBUTION	MOUNT
NHS01	084	CW	MT	120D	SUR

Light Engine

- 021** 4,480 Lumens @ 32W
- 042** 8,820 Lumens @ 63 W
- 063** 13,300 Lumens @ 95W
- 084** 17,640 Lumens @ 126W

Distribution

- 120D** 120° Beam
- 80D** 80° Beam

Color Temperature

- WW** Warm White
- NW** Neutral White
- CW** Cool White
- CC** Custom Color and/or Custom CRI

Mount

- SUR** Surface Mount
- HY** Handle Yoke Mount
- HOOK** Hook Mount
- CUS** Custom Mount

Voltage

- MT** Multi-Tap : Up to 277 VAC
- 347** 347 VAC
- 480** 480 VAC

Dimensions

