

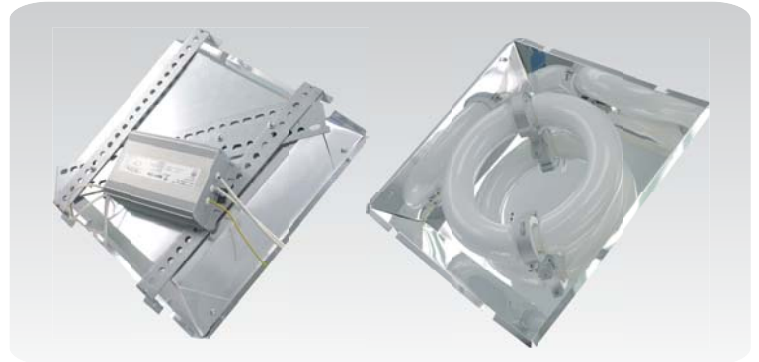
# INDUCTION - Custom Parking/Area Retrofit Kit

100,000 Hour Life

The Next Generation of Lighting



Lithonia - AS2 Series



Neptun Certified Retrofit Kit  
for Lithonia Lighting - AS2 Series

## Specification:

- Ballast Type	Electronic
- Start Method	InstantON™
- Hot Re-start	InstantON™
- Universal Input Line Voltage	120-277 VAC
- Input Line Frequency	50/60 Hz
- Lamp/Ballast System Life	100,000 Hrs.
- Lumen Maintenance @75,000Hrs	>70%
- Color Temperature	5000°K
- Color Rendering Index (CRI)	above 83
- Minimum Starting Temperature	-20°F
- Maximum Operating Temperature	160°F
- Lamp Operating Frequency	250 kHz
- Power Factor	> 0.98
- Total Harmonic Distortion	< 10%
- Inrush Current Peak	< 10 Amp
- FCC Compliance	Part 18, Subp. C

## Applications, Features, and Benefits

- Custom retrofit kit for the Lithonia Lighting - AS2 Series fixtures
- Custom designed anodized aluminum reflector for increased illumination
- Bright White Light (5000°K) for greater visibility and safety
- High Quality - Glare Free light with CRI above 83
- Electronic Ballasts made with long life components
- InstantON flicker-free Cold Start and Hot Re-Start
- High Power Factor, Low THD Ballast technology
- Advanced phosphors for high Lumen Maintenance and high lumen output
- Made with Amalgam Technology
- Up to 20 year maintenance free operation
- Retrofit kit comes completely assembled for simple drop-in installation
- 5 year system warranty

## Product Information - Retrofit Kit (Bulb-Ballast-Reflector)

Item No.	Description	Watts	Initial Lumens	Line Voltage Supply	Line Current	Total Harmonic Distortion (THD)	Power Factor	Packaging Dimensions		
								Width	Length	Height
LLAS2-40W-RK-UNV	Custom Retrofit Kit	40	3,200	120-277 VAC	0.35-0.15 Amp	<10%	0.98	18 in. 457 mm	18 in. 457 mm	8 in. 203 mm
LLAS2-80W-RK-UNV	Custom Retrofit Kit	80	6,400	120-277 VAC	0.69-0.30 Amp	<10%	0.98	18 in. 457 mm	18 in. 457 mm	8 in. 203 mm
LLAS2-100W-RK-UNV	Custom Retrofit Kit	100	8,000	120-277 VAC	0.87-0.37 Amp	<10%	0.98	18 in. 457 mm	18 in. 457 mm	8 in. 203 mm
LLAS2-120W-RK-UNV	Custom Retrofit Kit	120	9,600	120-277 VAC	1.05-0.45 Amp	<10%	0.98	18 in. 457 mm	18 in. 457 mm	8 in. 203 mm
LLAS2-150W-RK-UNV	Custom Retrofit Kit	150	12,000	120-277 VAC	1.31-0.56 Amp	<10%	0.98	18 in. 457 mm	18 in. 457 mm	8 in. 203 mm
LLAS2-175W-RK-UNV	Custom Retrofit Kit	175	14,000	120-277 VAC	1.53-0.66 Amp	<10%	0.98	18 in. 457 mm	18 in. 457 mm	8 in. 203 mm

Product Weight = 5-7 lbs.

### 1.) REMOVE EXISTING COMPONENTS

- A.) Disconnect power to fixture.
- B.) Open fixture housing by removing screws on lens.
- C.) Remove existing reflector, socket, ballast, ignitor, ballast plate, reflector straps and any other existing components.



### 2.) MOUNT NEW COMPONENTS

- A.) Place reflector with pre-installed ballast and bulb into the fixture. (Fig. A)
- B.) Match the supplied holes with the existing lens screw holes. (Fig. B)
- C.) Secure reflector to housing with existing reflector strap screws.
- D.) Wire the ballast to the power supply.
- E.) For wiring diagram, see Pg. 2
- F.) Remount fixture and supply power to fixture.

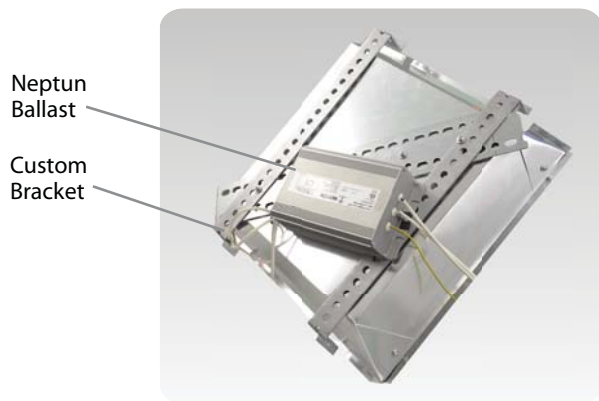


Fig. A

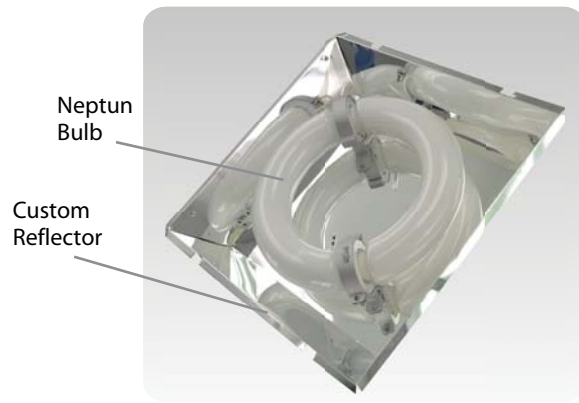


Fig. B



### **CAUTION!**

DISCONNECT POWER SUPPLY BEFORE INSTALLATION OR MAINTENANCE.  
INSTALLATION OF THIS PRODUCT SHOULD BE DONE BY A FULLY QUALIFIED AND LICENSED ELECTRICIAN OR TECHNICIAN.

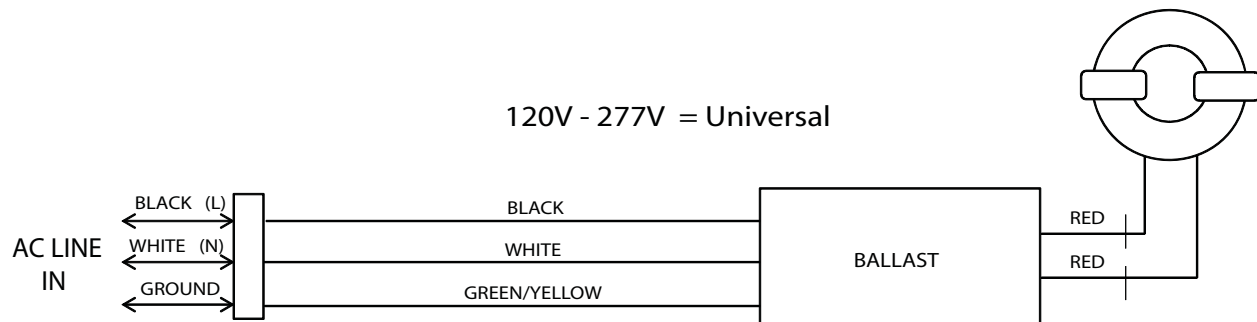
### INFORMATION

- A.) The Lithonia Lighting AS2 series fixtures can be retrofitted using a Neptun custom Circline Retrofit Kit.
- B.) This fixture requires a custom designed Neptun reflector and brackets
- C.) This fixture is retrofitted using a Neptun 150W induction bulb and Electronic Ballast.
- D.) This retrofit is available in 40W, 80W, 100W, & 120W, 150W, & 175W
- E.) The Neptun Electronic ballast is for universal voltage 120V - 277V.  
- 480V system also available



### ORDERING INFORMATION

- 40 Watt Bulb, Ballast, & Reflector = LLAS2-40W-RK-UNV
- 80 Watt Bulb, Ballast, & Reflector = LLAS2-80W-RK-UNV
- 100 Watt Bulb, Ballast, & Reflector = LLAS2-100W-RK-UNV
- 120 Watt Bulb, Ballast, & Reflector = LLAS2-120W-RK-UNV
- 150 Watt Bulb, Ballast, & Reflector = LLAS2-150W-RK-UNV
- 175 Watt Bulb, Ballast, & Reflector = LLAS2-175W-RK-UNV



### CAUTION!

DISCONNECT POWER SUPPLY BEFORE INSTALLATION OR MAINTENANCE.  
INSTALLATION OF THIS PRODUCT SHOULD BE DONE BY A FULLY QUALIFIED AND  
LICENSED ELECTRICIAN OR TECHNICIAN.