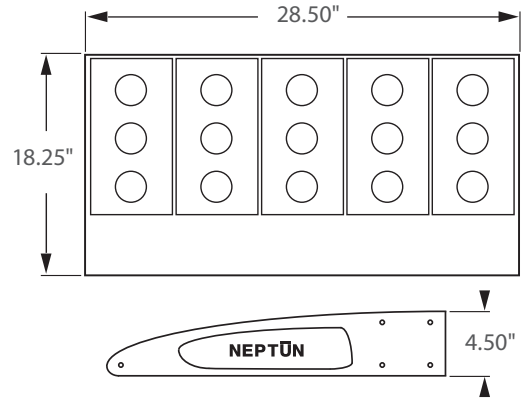




Please check latest update for complete information.  
[http://www.designlights.org/solidstate.about.QualifiedProductsList\\_Publicv2.php](http://www.designlights.org/solidstate.about.QualifiedProductsList_Publicv2.php)

**REPLACEMENT FOR 1000W HID**



**Incredible 75,000 hrs**

## GENERAL DESCRIPTION

Neptun's modular LED parking lot fixtures combine architectural form and versatility to make it an excellent choice for new construction or retrofit applications. The LED-31 series fixture is offered in a variety of wattages to provide maximum flexibility in all types of applications. The High output LED's and custom engineered optics provide excellent uniformity and efficiency. It can replace existing HID & HPS fixtures up to 1000W

## APPLICATION

- Parking Lot Lighting
- Street Lighting
- Walkway Lighting
- Area Lighting
- Security Lighting
- Storage Area Lighting

## STRUCTURE, MATERIALS, & FEATURES

- Heavy-gauge, die-cast aluminum housing.
- Corrosion resistant electrocoat grey finish (custom colors available).
- Slim, state of the art, low profile design for minimum wind load resistance.
- Continuous silicone gasket surrounds lens for weather tight seal.
- Correlated Color Temperature of (5000°K) for greater visibility and safety.
- High Output COB LED's.
- High power factor, low THD driver.
- InstantON flicker-free Cold Start and Hot Re-Start.
- Up to 15 years Maintenance free operation.
- 10 Year Warranty on complete fixture. (LED's, Driver, & Housing)
- **Optional:** Bi-Level Dimming, 0-10V Dimming, Remote Monitoring and ON/OFF Control

## ORDERING INFORMATION

Sample Number: LED-31400-M5-UNV-0-10VDIM-SF-850-LD-T3-GRY  
 Custom options and accessories available. Please consult factory

Series	Wattage	Voltage	Mounting	CCT	Accessories	Distribution	Color
LED-31 = Parking / Area Fixture	400-M5 = 400 W	UNV = 120-277 VAC 347V = 347VAC 480V = 480VAC BL-DIM = Bi-Level Dimming* 0-10VDIM = 0-10V Dimming* * Add after UNV	SA6 = 6" Side Arm WM6 = 6" Wall Mount SA6R = 6" Side Arm w/ Round Pole Adapter SF = Slip Fitter YK = Yoke Bracket ** See Pg. 2 for mounting	835 = 3500°K 841 = 4100°K 850 = 5000°K* * Standard	LD = Twistlock Photocell MD = Motion Sensor	T3 = Type 3 T5 = Type 5	GRY = Grey * Custom Colors Available



### PRODUCT INFORMATION

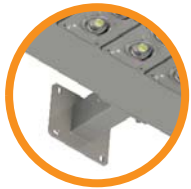
Model No.	Description	Rated Watts	Input Watts	Initial Lumens	Universal Line Voltage (VAC)	Max Line Current (Amp) 120 - 277	THD	Power Factor	Weight
LED-31400-M5-UNV	Area/Parking Fixture	400	405	36,000	120-277	3.49 - 1.51	<20%	>0.98	50 lbs.

### SPECIFICATIONS

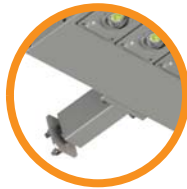
- LED Driver ..... Constant Current
- Power Supply ..... 700mA
- Start Method ..... InstantON
- Hot Re-start ..... InstantON
- Universal Input Line Voltage ..... 120-277 VAC
- Input Line Frequency ..... 50/60 Hz
- Ballast Off-State Draw ..... 0 Watts
- Sound Rating ..... Class A
- ANSI Surge Protection ..... Class A
- LED / Driver System Life ..... 75,000 Hrs.
- Lumen Maintenance @50,000Hrs ..... > 70%
- Color Temperature ..... 5,000°K
- Color Rendering Index (CRI) ..... > 80
- Minimum Starting Temperature ..... -40°C
- Maximum Starting Temperature ..... 50°C
- Lumens per Watt ..... > 90
- Shock / Vibration Resistant ..... Yes
- Power Factor ..... > 0.98
- Total Harmonic Distortion ..... < 20%
- Inrush Current Peak ..... < 10 Amp
- FCC Compliance ..... Part 18, Subp. C
- EPA Rating ..... 0.77
- IP Rating ..... IP65
- Warranty ..... 10 Year

### MOUNTING CONFIGURATION

Wall Mount (WM6)



Arm Mount Single (SA6)



Flood Mount (SF)



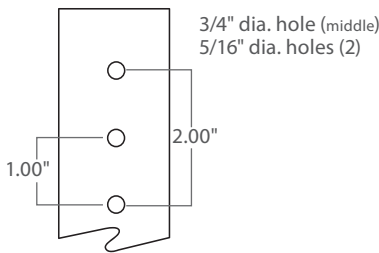
Yoke Mount (YK)



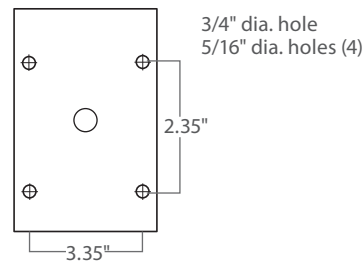
2-1/2" I.D. Accepts up to 2-3/8" Tenon or Pipe

### DRILLING PATTERNS

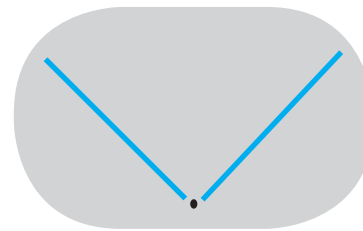
SA6, SA6R



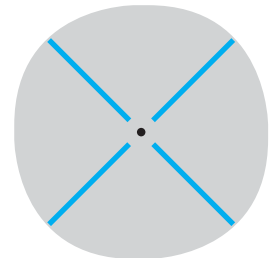
WM6



### PHOTOMETRICS (See Complete IES File)



Type 3 Distribution



Type 5 Distribution